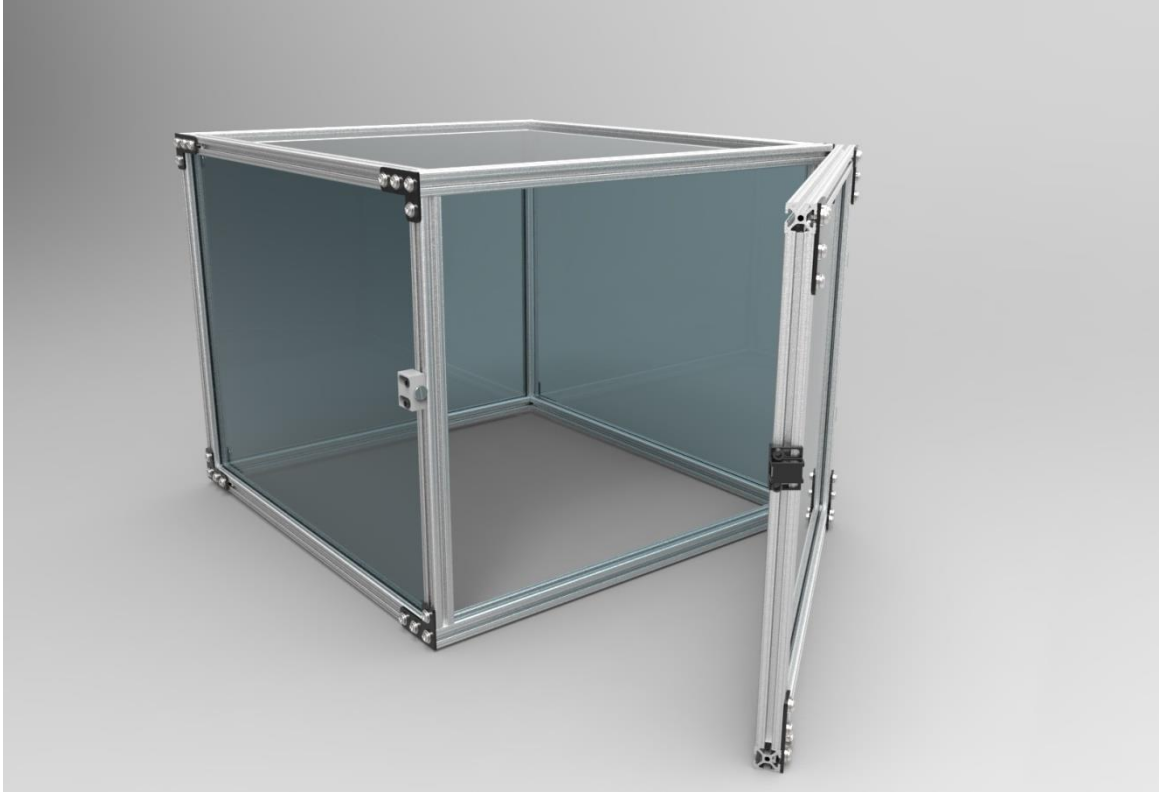


CNC Piranha

Machine Case - Assembly Instructions



Packing list

Bars:

25"- 10

19"- 6

Plexiglas: 23.6 x 19.6 – 2

25.6 x 23.6 – 1

25.6 x 19.6 – 2

Hardware: 1/2" bolts - 48

Washers- 48

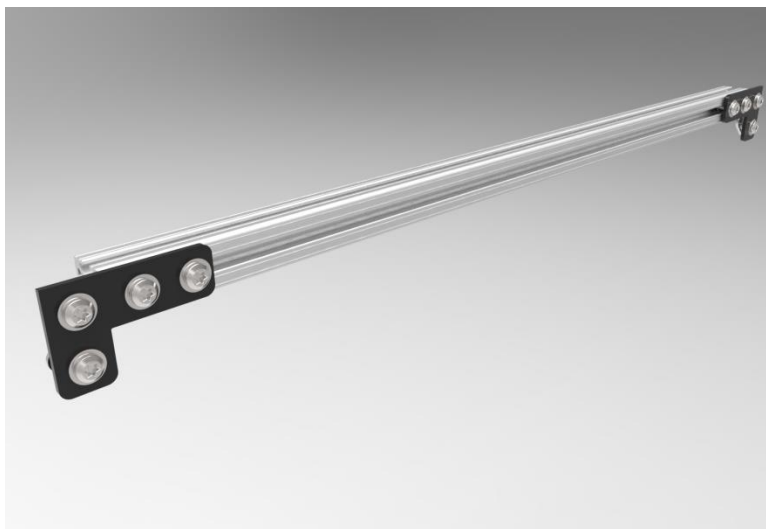
T slot nut - 48

Hinges - 2

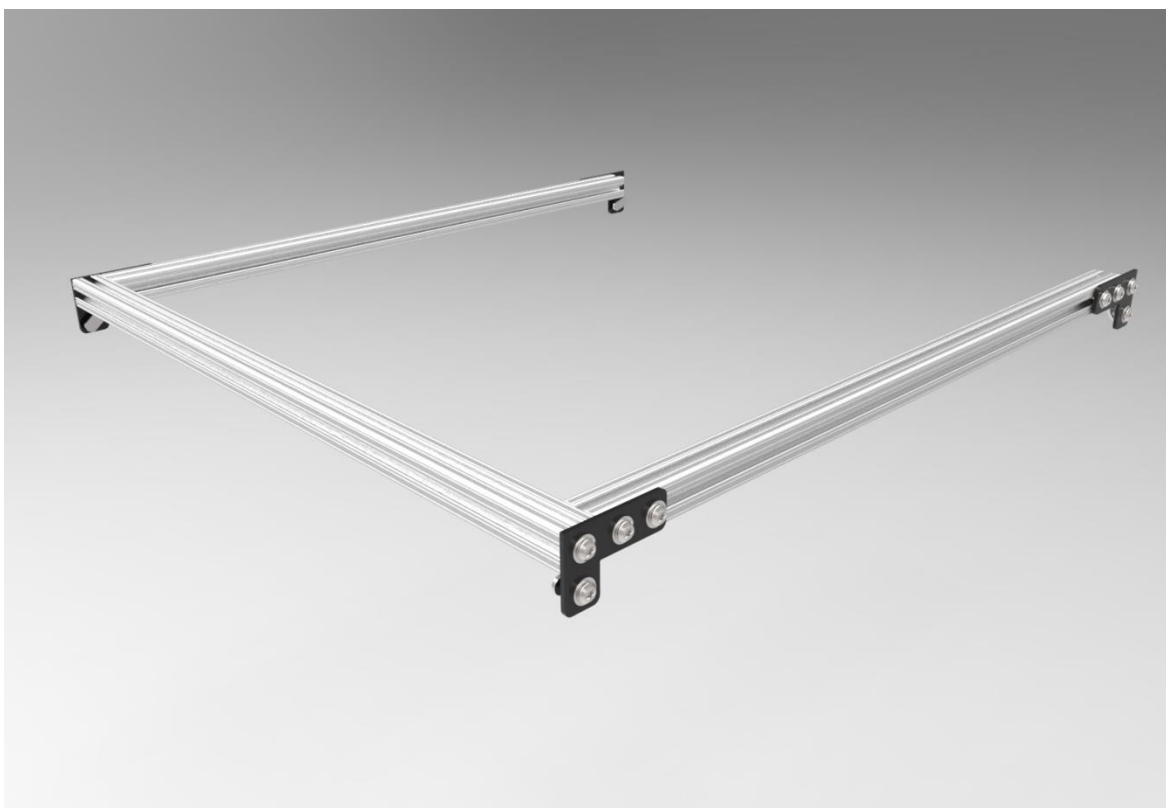
Door latches - 1

L Connector - 12

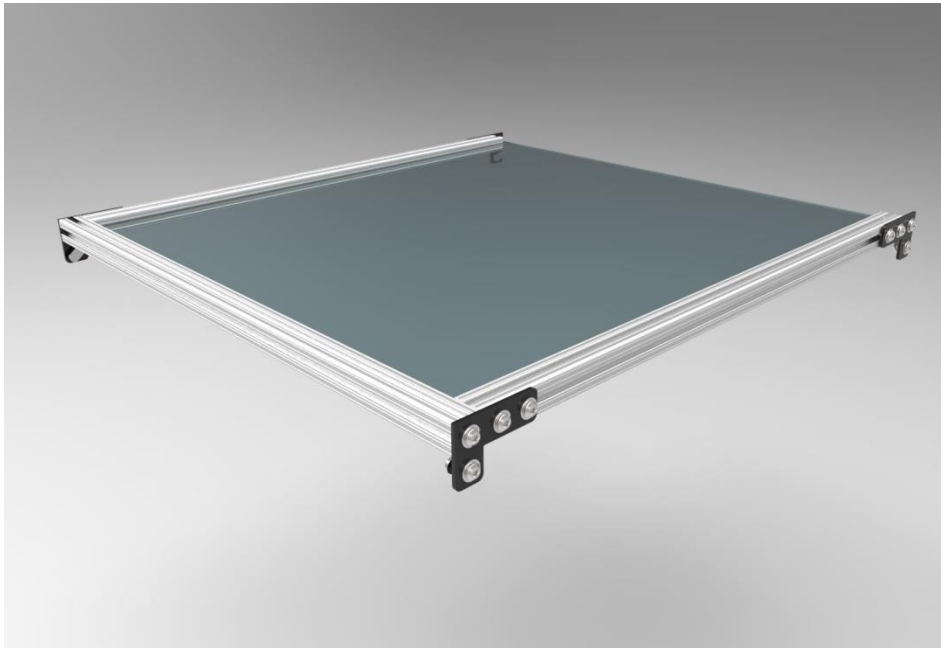
Attach an angle bracket to either end of four 25" extrusions.



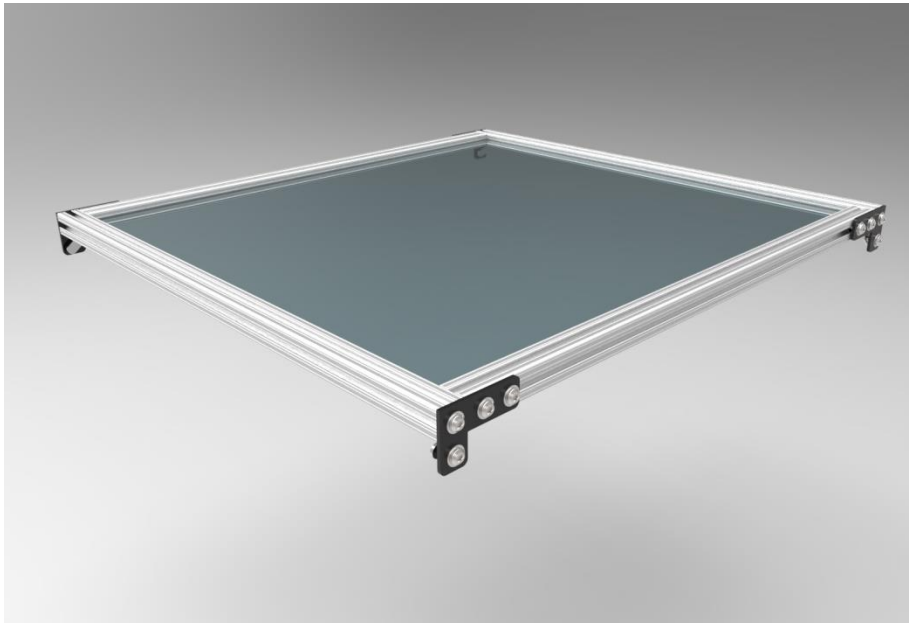
Attach two of these extrusions with another 25" extrusion. Do this by screwing directly into the end of the extrusion.



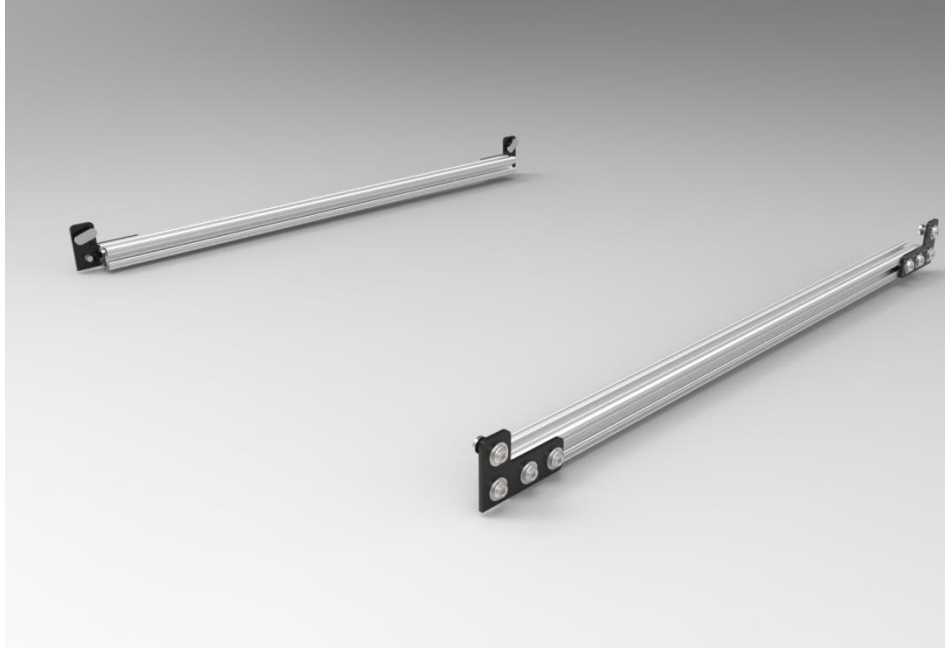
Slide a piece of 25.6 x 23.6 Plexiglas into the extrusions.



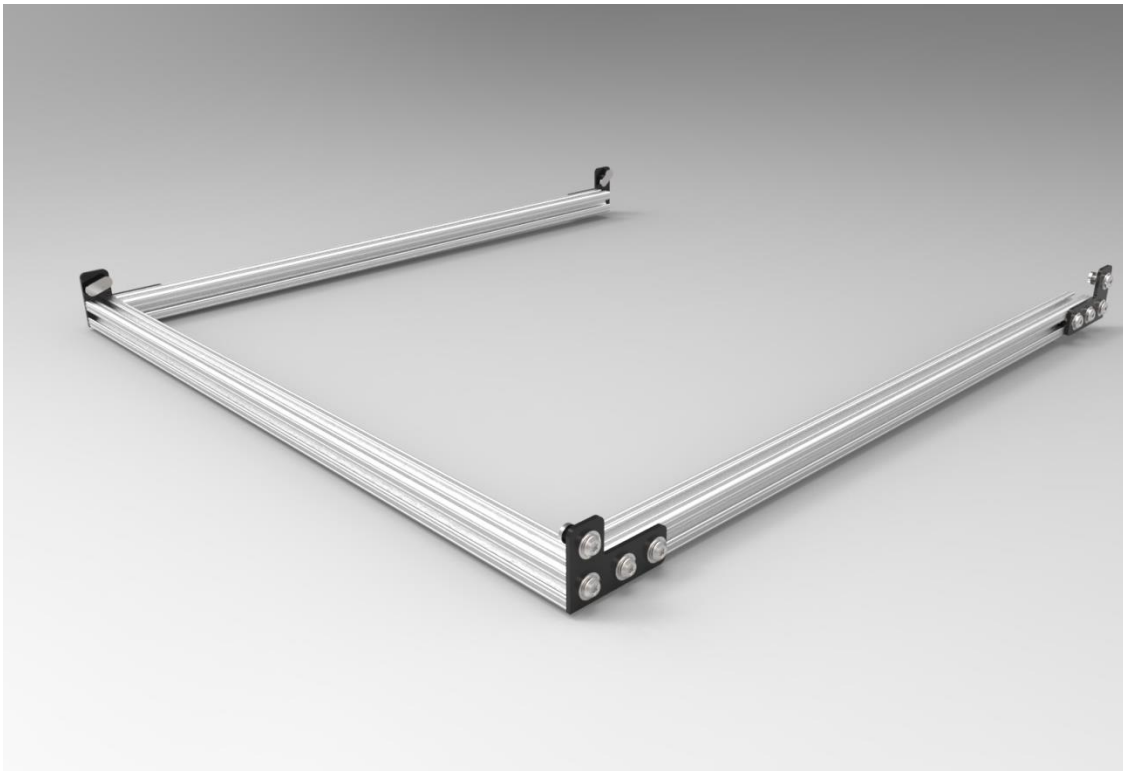
Connect the remaining angle brackets with another 25" extrusion. This completes the top of the case.



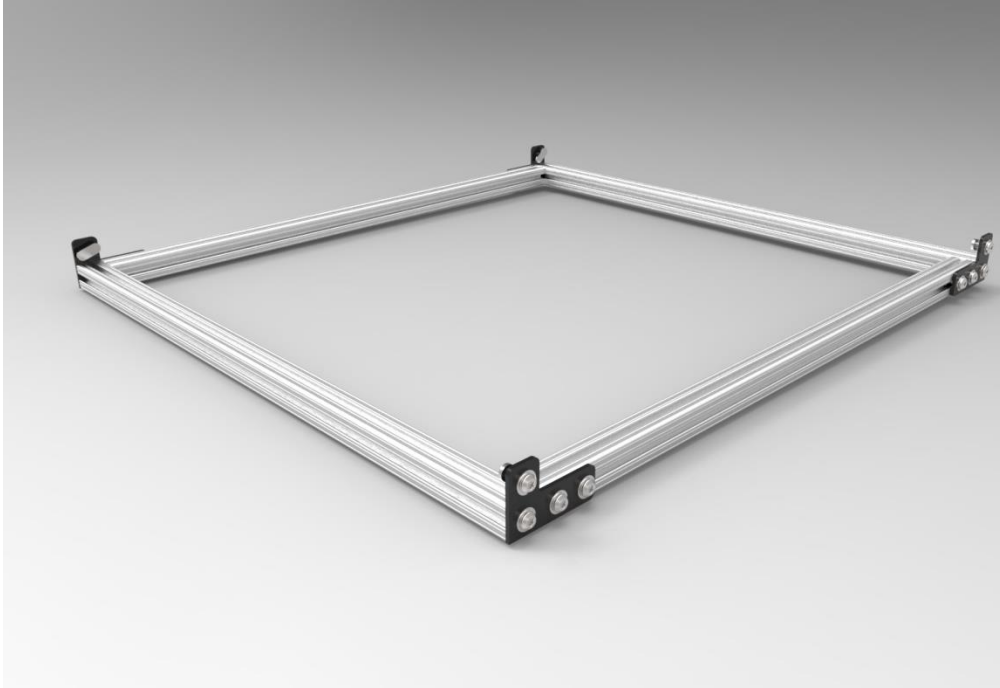
This next step requires the two remaining extrusions with attached angle brackets.



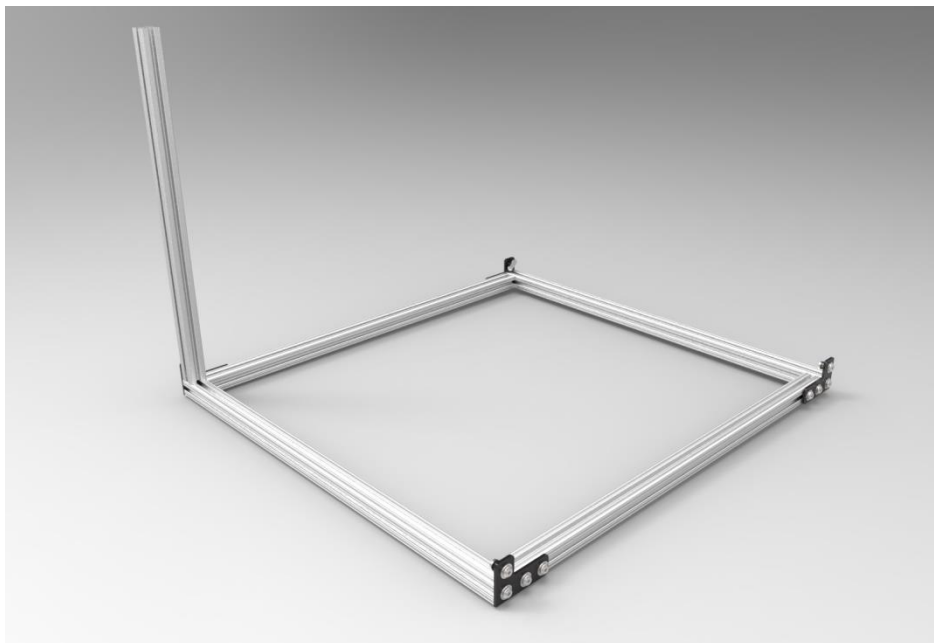
Attach these two extrusions with another 25" extrusion. Do this by screwing directly into the end of the extrusion.



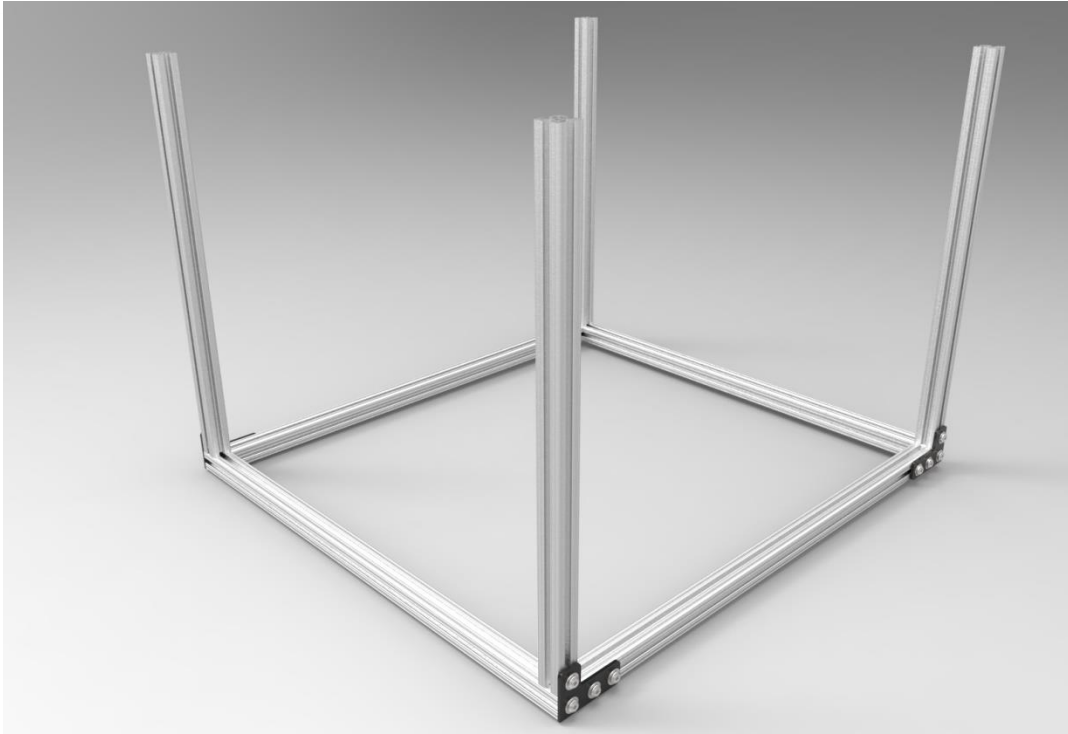
Repeat the previous step on the opposite end of the extrusions. This will complete the bottom of the case.



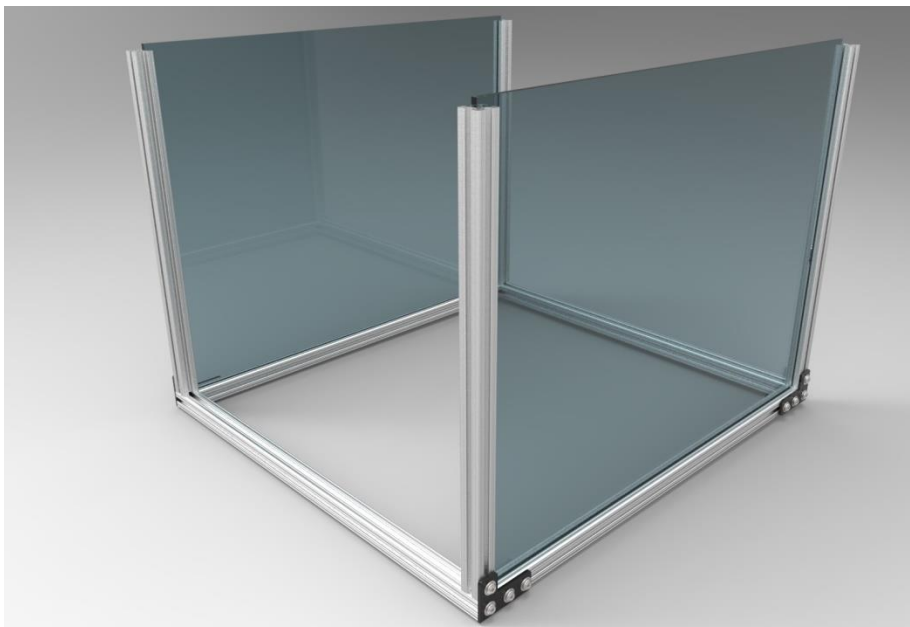
Attach one of the 19" extrusions to one of the angle brackets attached to the completed bottom of the case.



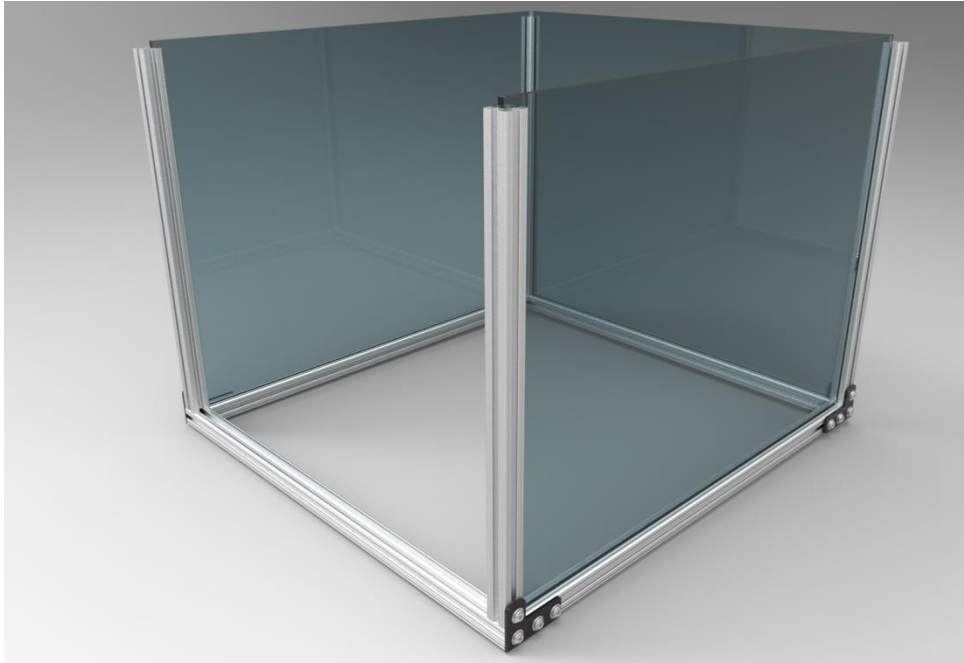
Repeat this step until a 19" extrusion is attached to each corner of the case bottom.



Slide two pieces of 25.6 x 19.6 Plexiglas into the 19" extrusions on opposite sides of the case. The Plexiglas should be inserted on the same sides as the angle brackets, as depicted below:



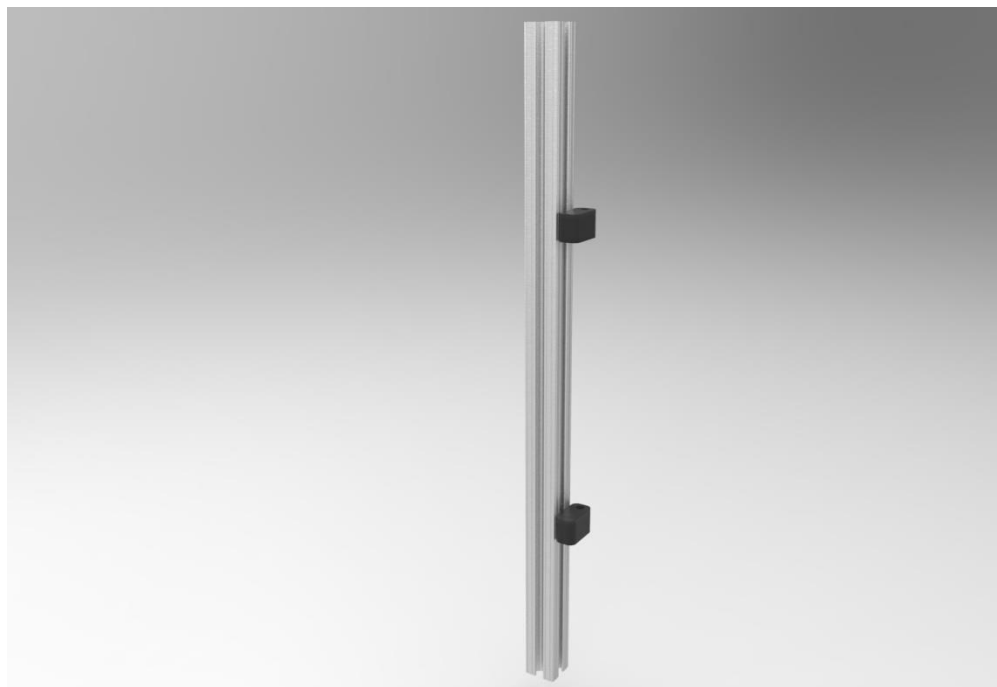
Slide one sheet of 23.6 x 19.6 Plexiglas into the 19" extrusions to form the back of the case.



Insert the top and bottom of each of the two hinges into the outside of the extrusion on the front of the case as shown below:



The next step is to assemble the door. Slide the middle pieces of each door hinge into one piece of 19" extrusion.



Attach a 25" extrusion to the bottom of the 19" extrusion using an angle bracket. Ensure that the 25" extrusion is perpendicular to the hinges attached in the previous step.



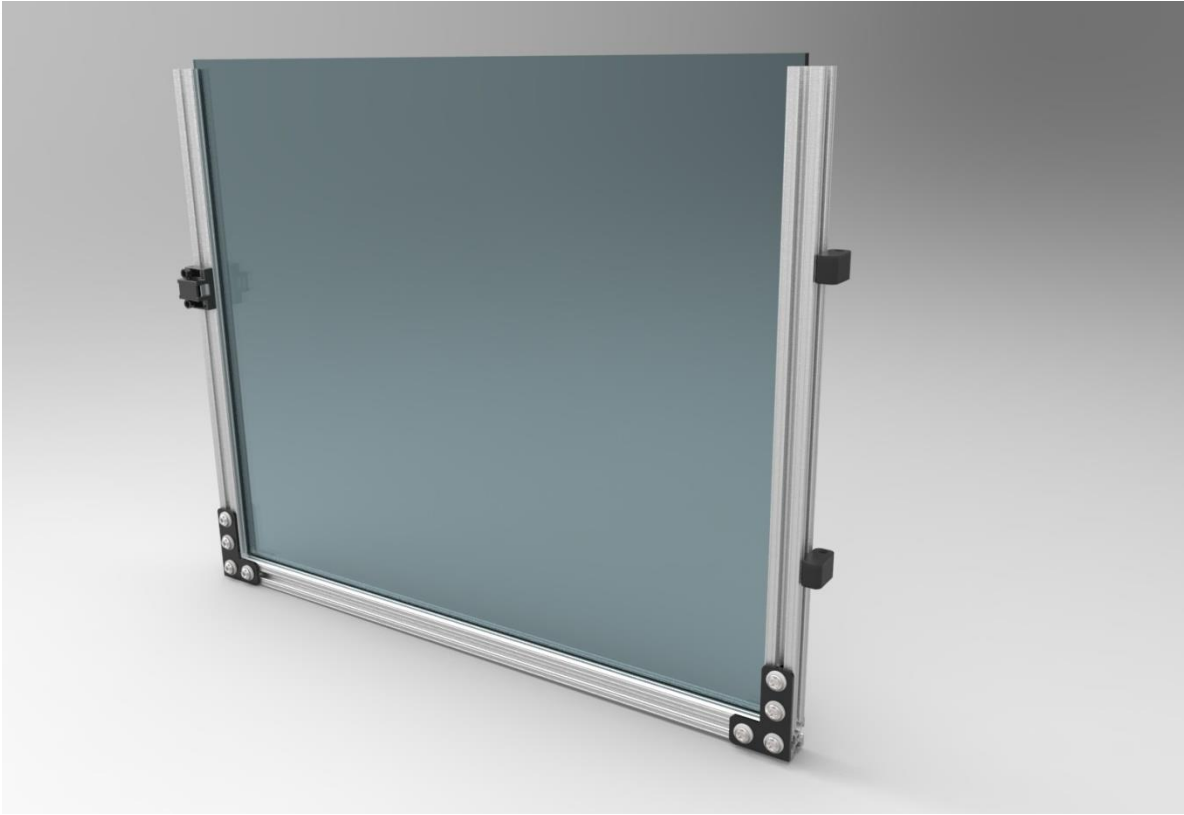
Attach a 19" extrusion to the 25" extrusion using an angle bracket.



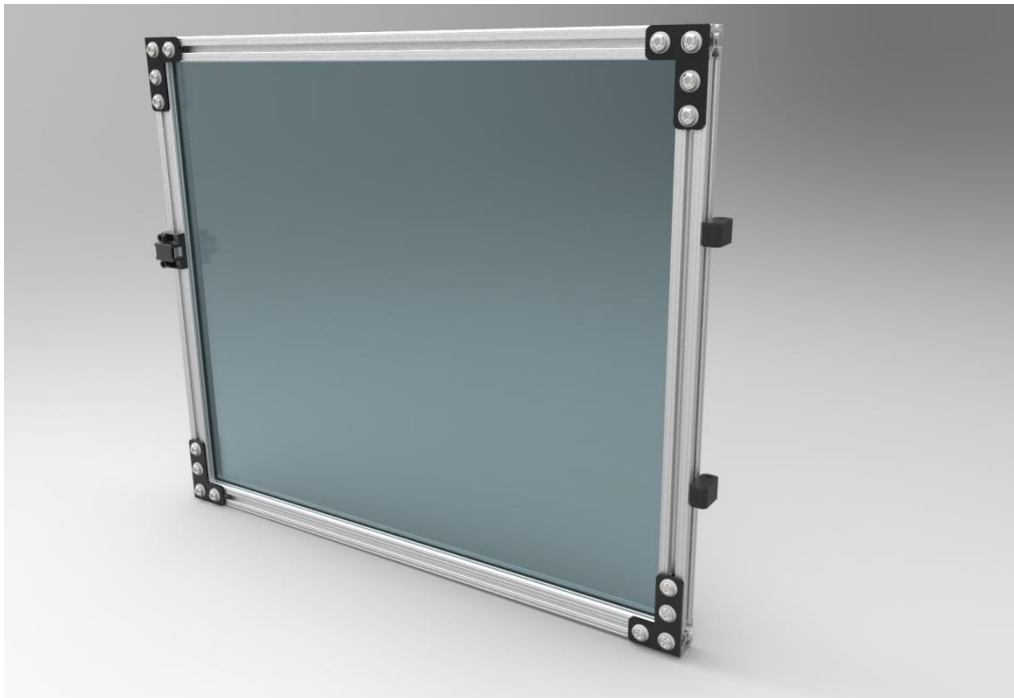
Attach the magnetic door latch to the outside of the 19" extrusion as shown below:



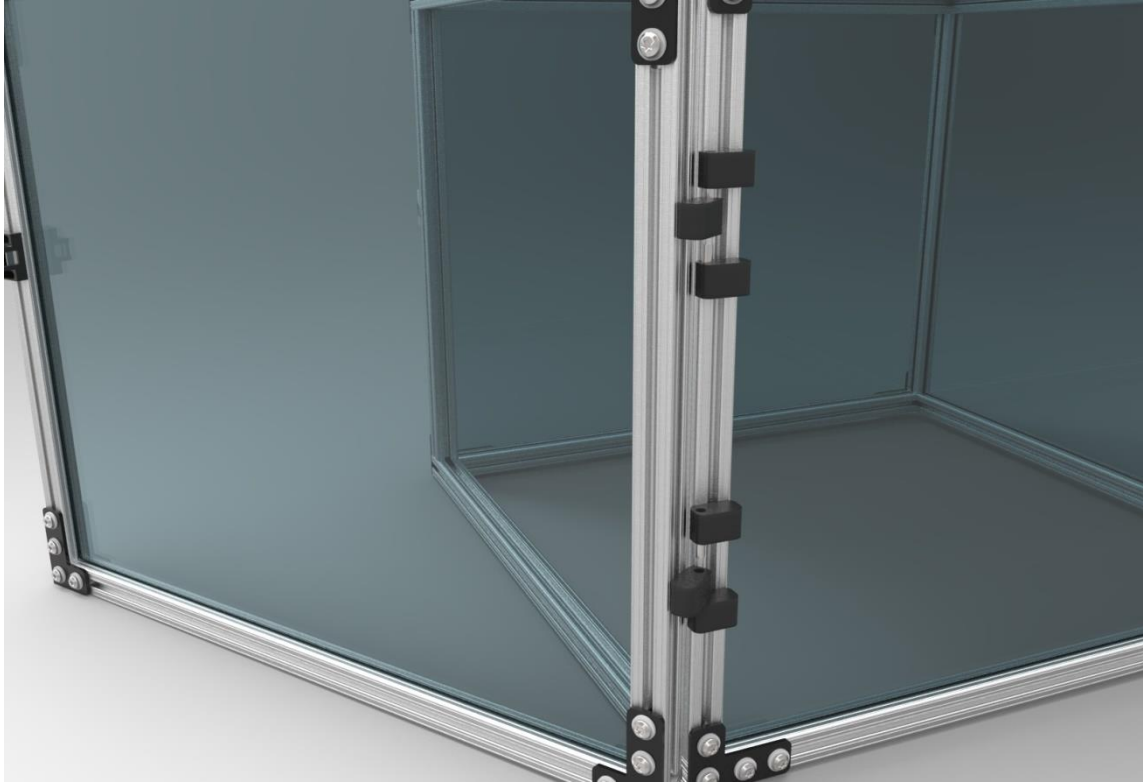
Slide a sheet of 23.6 x 19.6 Plexiglas into the 19" extrusions to create the face of the door.



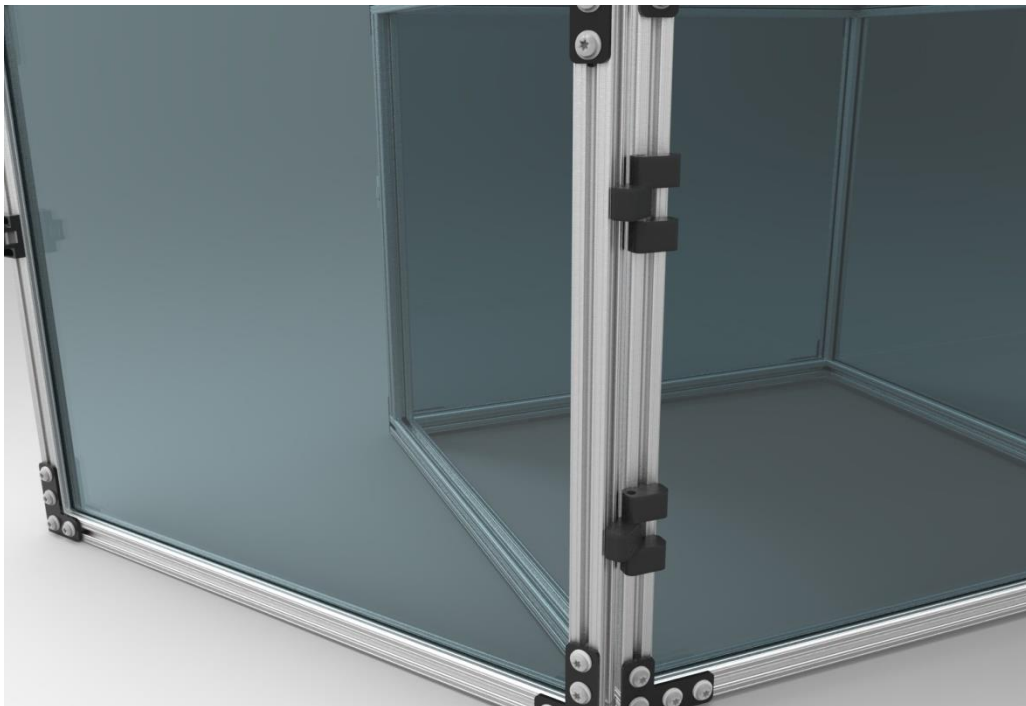
Attach the last 25" extrusion to the top of the two 19" extrusions using angle brackets to create the top of the door. The door is now complete.



To attach the door, fit the top and bottom hinges that are affixed to the case around the center hinges affixed to the door, as shown below.



Move the pieces of each hinge so that they are flush with one another and tighten them, as shown below:



The Piranha case is now complete.

