



Shark Tooth Drawing Tool Guide



Using the CNC Drawing Tool on the



To Our Customers

Thank you for purchasing the Shark Tooth Drawing tool.

This manual has been written with the assumption that the owner is familiar with the basic operation of a computer as well as the basic techniques for the safe operation of woodworking power tools. Information in this manual is subject to change without notice.

This manual is also written under the assumption the owner has spent time learning design tutorials and projects on www.Vectric.com (the makers of the designing software that is supplied with your machine)

Again, thank you for purchasing the CNC Drawing Tool. We are confident you will be pleased with its performance, the ability to draw a wide variety of signs and other projects. If you ever have any questions or comments, feel free to contact us at the address below.

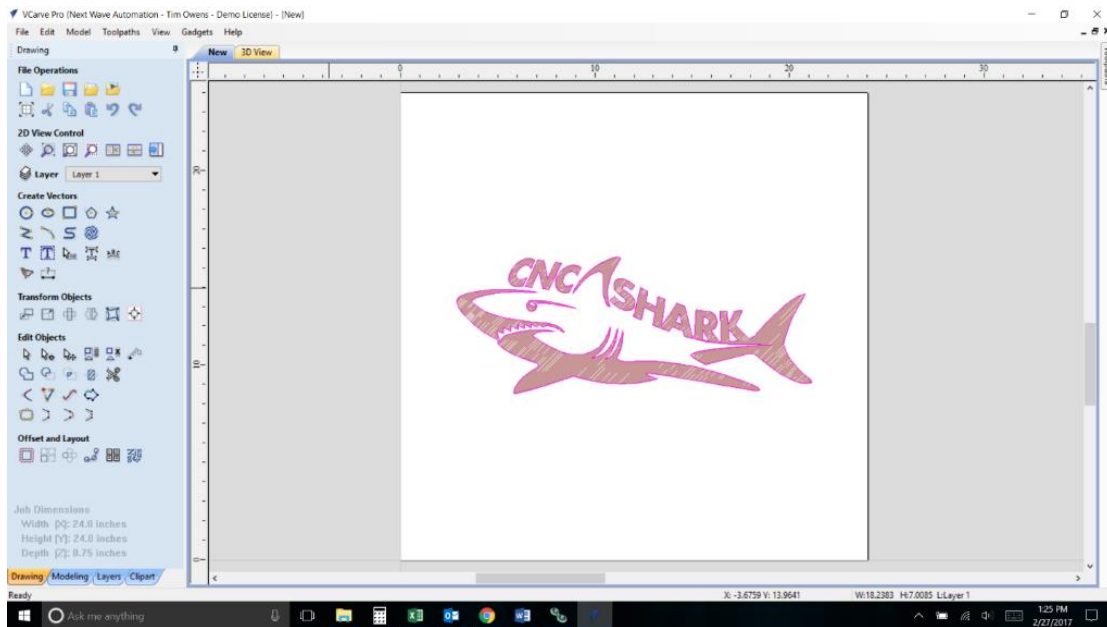
Next Wave CNC
600 W. Boundary St.
Perrysburg, Ohio 43551 USA
www.NextWavecnc.com

Copyright Next Wave Automation LLC All Rights Reserved.

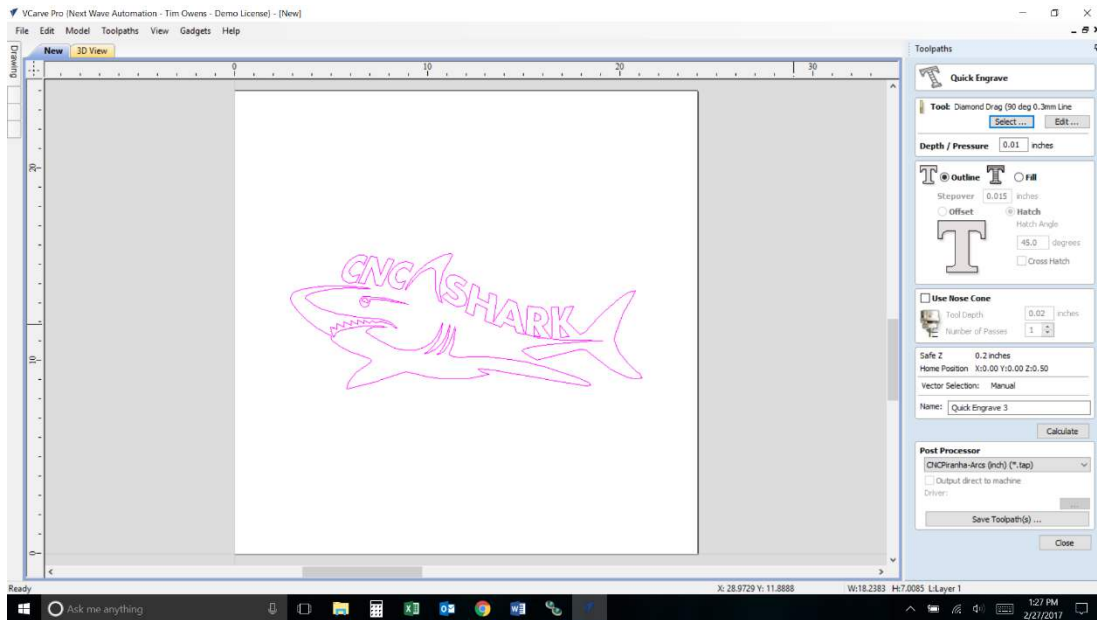
April 2020

Updates of this manual are
Available at www.nextwavecnc.com

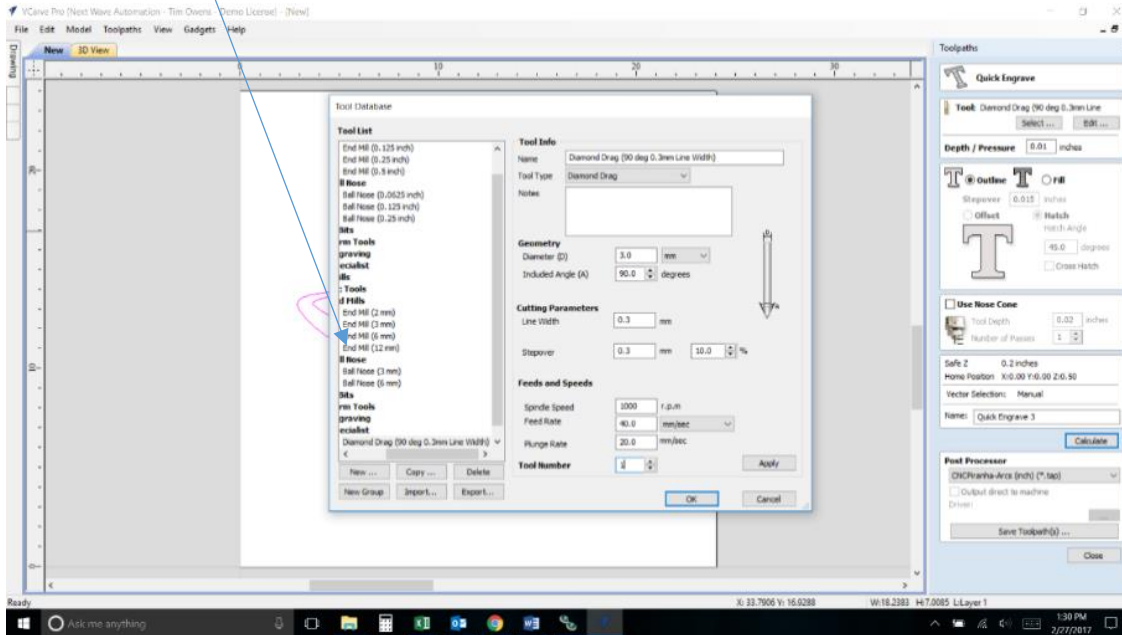
Designing - Create or load the Vector file into V-Carve just as you do with any design.



Highlight image and Select Quick Engrave from Toolpath

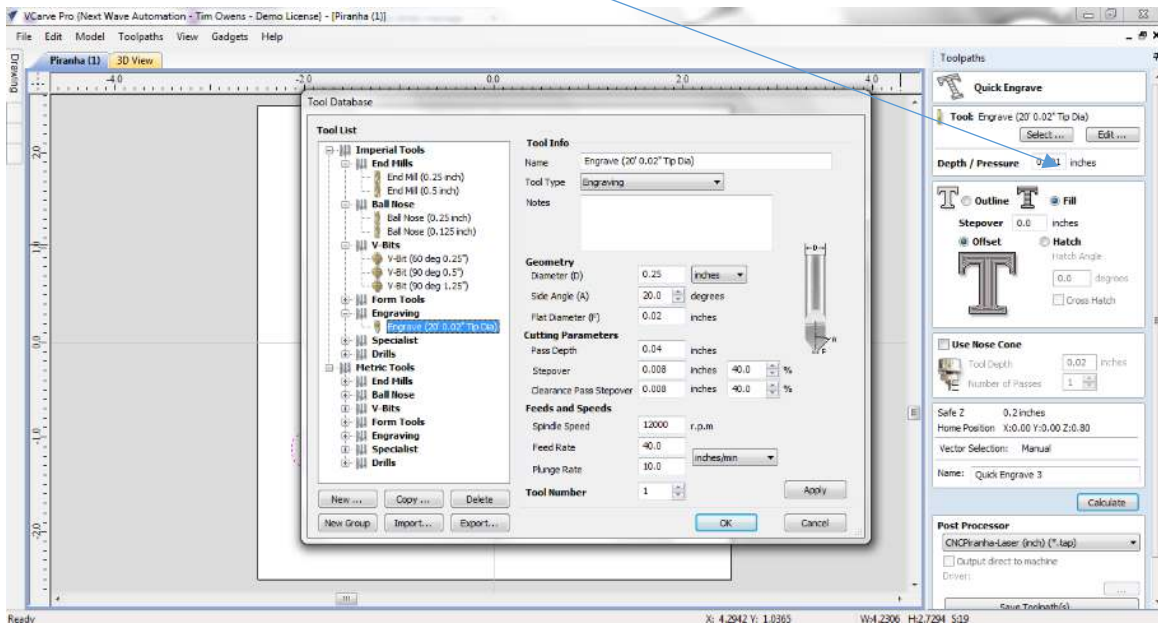


Select Any Engraving Bit



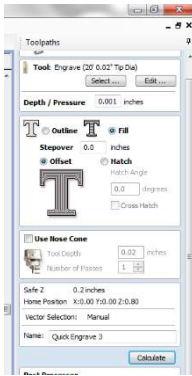
Depth / Pressure Usage:

- We recommend setting the depth to ".01" inches.



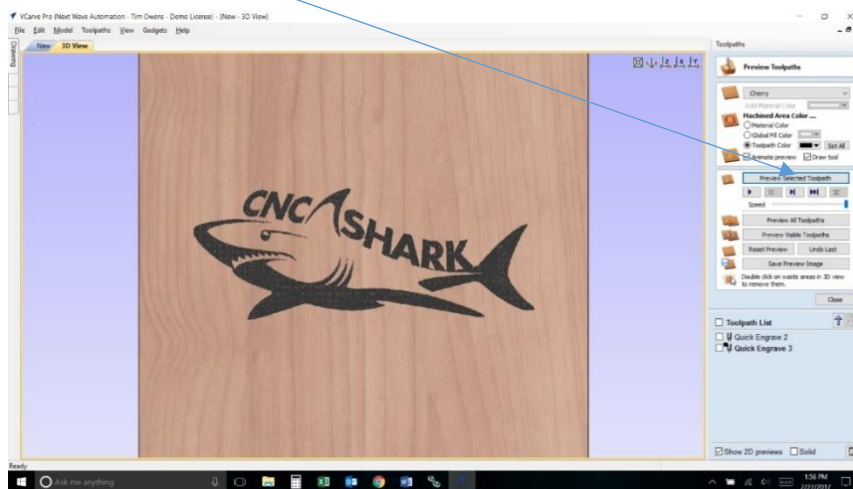
Select Pattern Desired (Outline or Fill, Offset or Hatch) and Press Calculate:

- If using Fill, then type in the Stepmover at .015. Adjust as necessary.
- If using Hatch, then type in the desired angle in degrees.

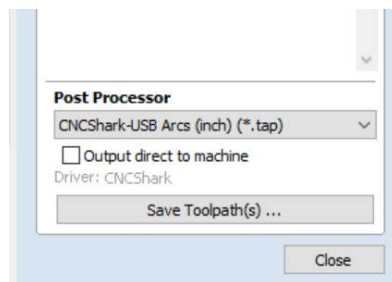


Preview Engraving Toolpath:

- For best viewing, select a Toolpath Color. The Toolpath Color can be changed by choosing one from the drop down.

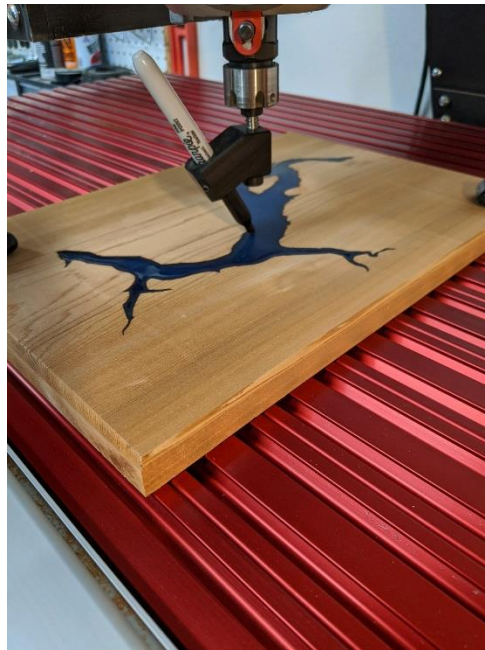


Select the Post Processor for your machine as you would if you were carving any file



Installing the CNC Drawing Tool

- **Make sure power is turned off to the router or spindle.**
- Insert desired writing instrument into the Drawing tool and tighten the two allen screws evenly to allow for the centering of the drawing tool.
- Insert CNC Drawing Tool into router collet and tighten the collet nut.



Alignment and positioning of Shark Tooth Drawing Tool

- Position the drawing tool by jogging the X and Y axis to the programs point of origin (starting point).
- Lower the head of the drawing tool by using the jog buttons for the Z axis until the head it lightly touching the work piece. NOTE: If this spot isn't supposed to receive ink, then put down a small piece of tape to protect your material.
- Press the Zero XYZ button to set this as the zero position
- The system is now ready to run your program.
- Load the TAP file onto a USB flash drive.
 - NOTE: A SanDisk flash drive formatted to FAT32 are recommended.
- Insert USB drive into the Pendant
- Select the tap file you created in Vcarve.
- Select Run.

